

AKS
ESTATES



Rostrevor Gardens Southall

£294,950

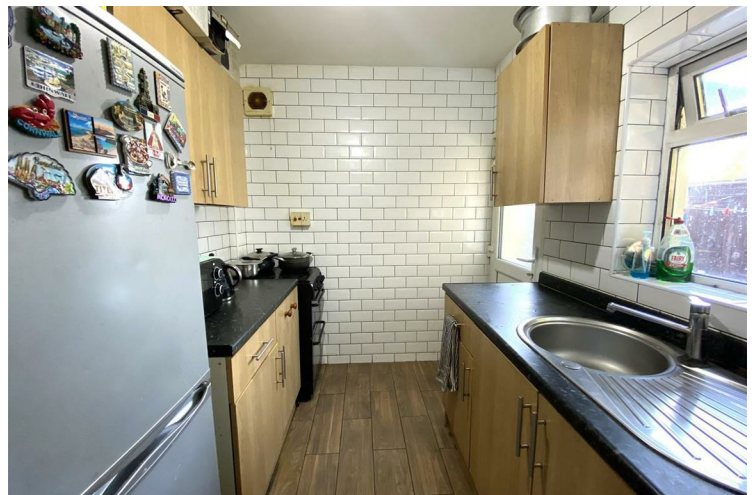
Leasehold

This delightful two bedroom ground floor maisonette presents an excellent opportunity for first time buyers. The property boasts well proportioned living features throughout including a spacious reception room that invites natural light, creating a warm and welcoming atmosphere.

The two bedrooms provide ample space for relaxation and rest, making it an ideal setting for small families or couples. The maisonette also includes a well appointed bathroom, ensuring comfort and practicality for everyday living.

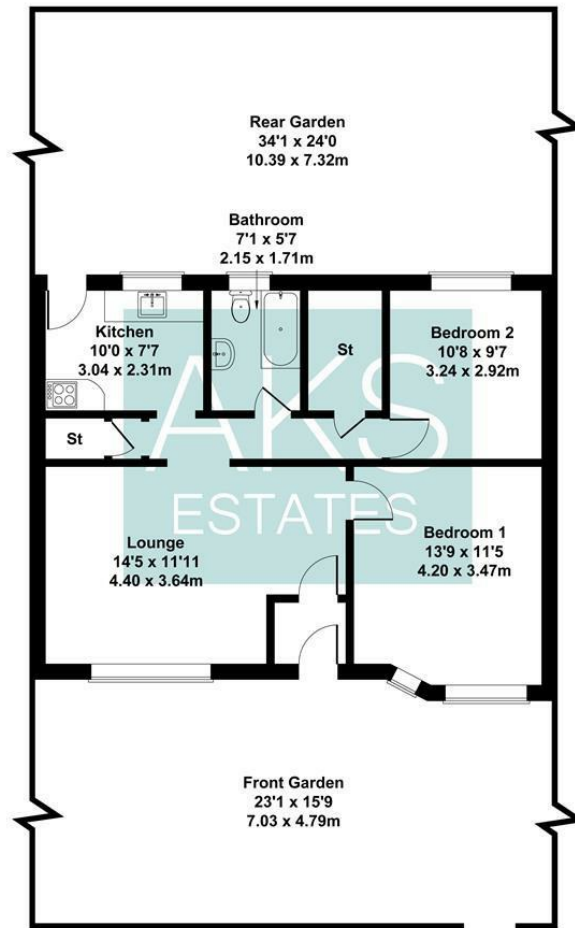
One of the standout features of this property is the front and rear gardens, which offer a lovely outdoor space the perfect backdrop for summer gatherings.

Conveniently located within walking distance to local schools, shops, and bus stops, this home is perfectly positioned for those who value accessibility and community. The sought after location enhances the appeal, making it a desirable choice for anyone looking to settle in a vibrant neighbourhood.



Rostrevor Gardens, Southall

Approximate Gross Internal Area
753 sq ft - 70 sq m



Not to Scale. Produced by The Plan Portal 2025
For Illustrative Purposes Only.



Energy Efficiency Rating		
	Current	Potential
Very energy efficient - lower running costs		
(92 plus) A		
(81-91) B		
(69-80) C		
(55-68) D		
(39-54) E		
(21-38) F		
(1-20) G		
Not energy efficient - higher running costs		
England & Wales	EU Directive 2002/91/EC	

Agents Note: Whilst every care has been taken to prepare these particulars, they are for guidance purposes only. All measurements are approximate and are for general guidance purposes only and whilst every care has been taken to ensure their accuracy, they should not be relied upon and potential buyers/tenants are advised to recheck the measurements

Heston
131A Heston Road
Hounslow
TW5 0RF

020 8059 0595
shiv@aksestates.co.uk
aksestates.co.uk

